



VERIFICHE SUPERFICI

AREA STANDARD IN CESSIONE

- (51,72x8,50)
- (3,84+7,73)x8,50/2
- [(3,14x16,48x16,48x45)/360]-[(6,49x6,49x3,14x45)/30]
- (2,93+7,21)x8,52/2
- [(21,61+30,35)x38,04/2-(50)-(30)-[(3,14x5,72x5,72x117)/360]-[(3,14x5,99x5,99x65)/360]-[(3,14x5,99x5,99x110)/360]
- (21,61+21,20)x5,00/2
- (38,04x5,00)
- (23,14+25,72)x8,52/2
- (3,57+3,23)x24,19/2
- (3,23+5,44)x18,33/2
- (42,14x1,09)/2
- (3,42x31,52)
- [(3,14x7,50x7,50x57)/360]-[(4,02x6,32)/2]
- (3,36+4,30)x14,12/2
- (4,30+3,82)x40,76/2
- (4,06+8,42)x5,85/2
- (4,50x4,82)/2
- (4,50x3,99)/2

Totale mq. 2.531,10

VERDE IN CESSIONE - STANDARD QUALITATIVO

- (78,82x37,83)/2
- (78,82x33,53)/2
- (3,91x7,20)/2-(3,14x7,50x7,50x57/360)-(7,20x6,60/2)
- (3,45x1,53)/2
- (39,51x2,11)/2

Totale mq. 2.866,47

TOTALE IN CESSIONE mq. 5.565,71

VERDE FILTRANTE

- 50,00
- (3,14x5,72x5,72x117)/360
- 30,00
- (3,14x5,99x5,99x65)/360
- (3,14x5,99x5,99x110)/360
- (42,01x10,03)
- (31,79+35,82)x5,04/2
- (5,00+4,31)x4,39/2
- (11,38+4,44)x41,37/2
- (9,90x9,44)/2
- (44,25+44,97)x5,00/2
- (9,10x5,68)
- [(3,14x7,50x7,90x74)/360]-[(2,22x7,69)/2]
- (2,85+1,42)x15/2
- (4,23x6,72)/2
- (0,93+4,23)x16,68/2

Totale mq. 1.549,99

PARCHEGGIO PRIVATO

- (44,97x2,79)
- (2,50x16,81)
- (17,14x12,56)/2
- (16,40x12,42)/2
- (1,95+2,07)x6,57/2
- (2,20+2,08)x6,57/2
- (13,75+15,14)x6,31/2
- (1,90+2,44)x6,31/2
- (0,14+0,93)x3,85/2
- (15,00x26,18)

Totale mq. 911,98



PROGETTO AMBITO DI TRASFORMAZIONE "AC4"

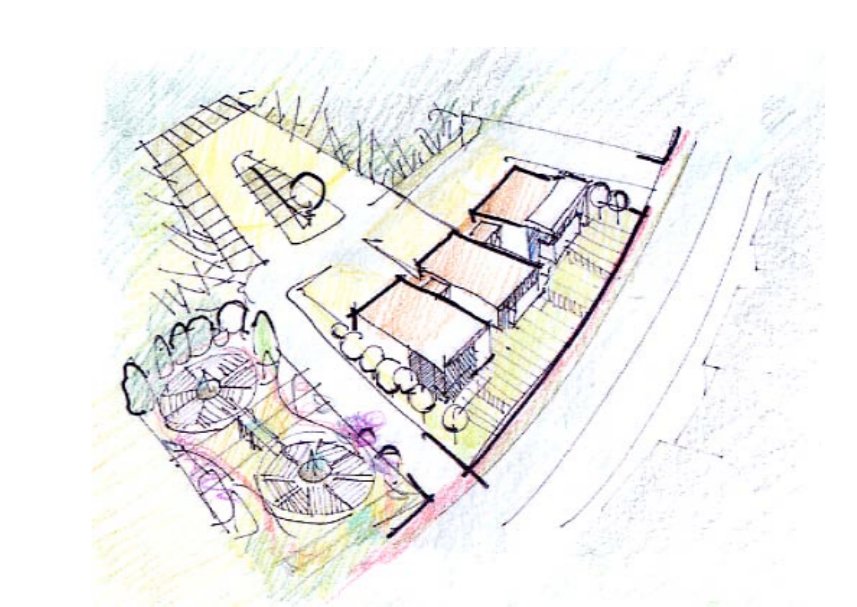


TAVOLA VERIFICA AREE IN CESSIONE PROGETTO - CALCOLI	NUMERO TAVOLA 12 SCALA 1:500	DATA 10/11/2014 VARIAZIONE
CONSULENTE	RESPONSABILE PROCEDIMENTO	
PROGETTO	PROPRIETA' FRIGERIO MASPERO ANGELA POZZI FRANCESCO POZZI AUGUSTO eredi	WORK TEAM arch. S. STOCCHI arch. C. MONTORFANO arch. L. BOGA arch. A. BARNI



Via Carlo T. 20521 Meda (BS)
Tel. 030/243881 - Fax 030/243889